

Qty. Description

1 UNILIFT KP.150.AV.1



Note! Product picture may differ from actual product

Product No.: [011H1900](#)

Submersible drainage pump

Vertical single-stage stainless steel submersible pump with vertical discharge port and integrated submersible 1-phase canned motor in insulation class F with thermal overload protection.

The pump is fitted with suction strainer and a carrying handle and is supplied with a 10 m mains cable and vertical level switch for automatic start and stop.

The impeller is a semi-open impeller for 10 mm free passage suitable for pumping groundwater, surface water, rain water and similar liquids.

The pump has a double shaft seal consisting of two lip seals with grease in-between.

The pump has an outer casing ensuring continuous cooling of the motor by the pumped liquid. The rotor shaft operates in two maintenance-free carbon bearings cooled by the pumped liquid

The motor is filled with a non-toxic motor liquid.

Liquid:

Liquid temperature range: 0 .. 50 °C

Selected liquid temperature: 20 °C

Density: 998.2 kg/m³

Technical:

Maximum flow: 2.36 l/s

Rated head: 2.94 m

Max. Particle: 10 mm

Approvals: CE,RCM,VDE,LGABG,EAC,TUVRHWD,MORO,UKCA,SEPRO

Materials:

Pump housing: Stainless steel

EN 1.4301

AISI 304

Impeller:

Stainless steel

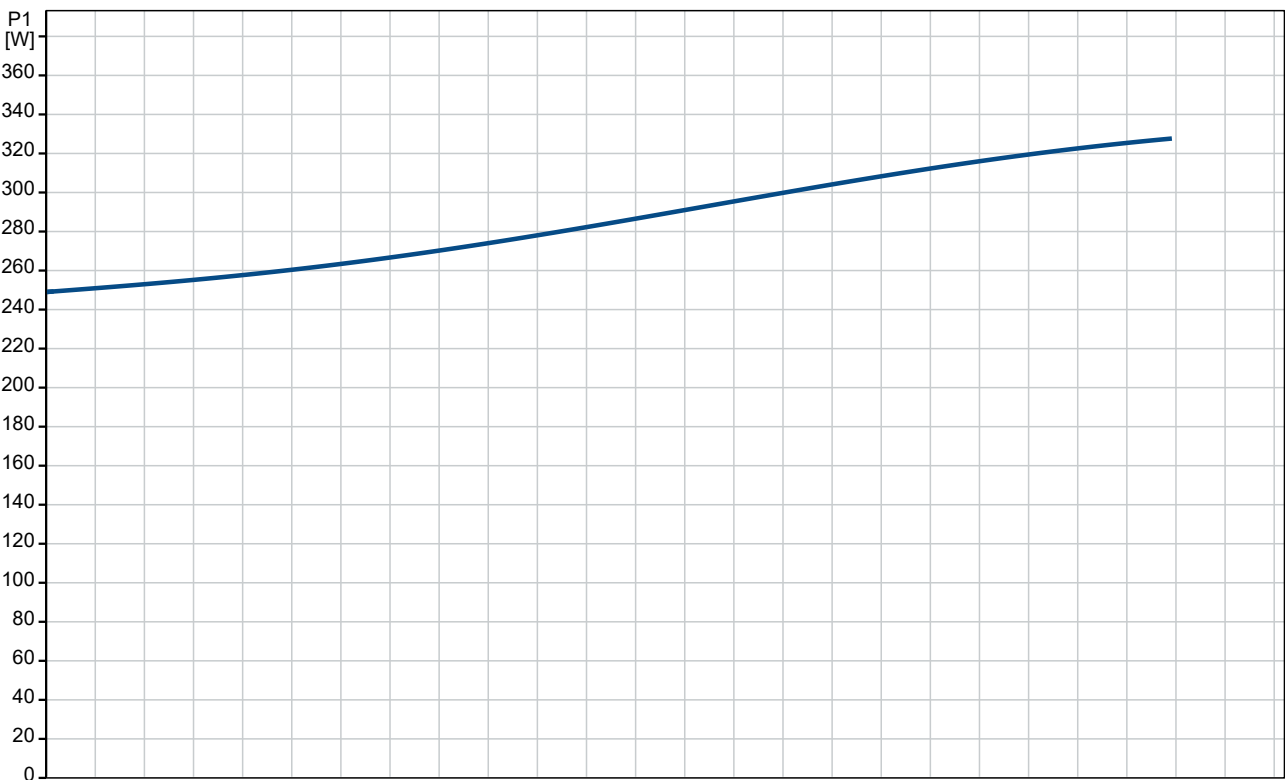
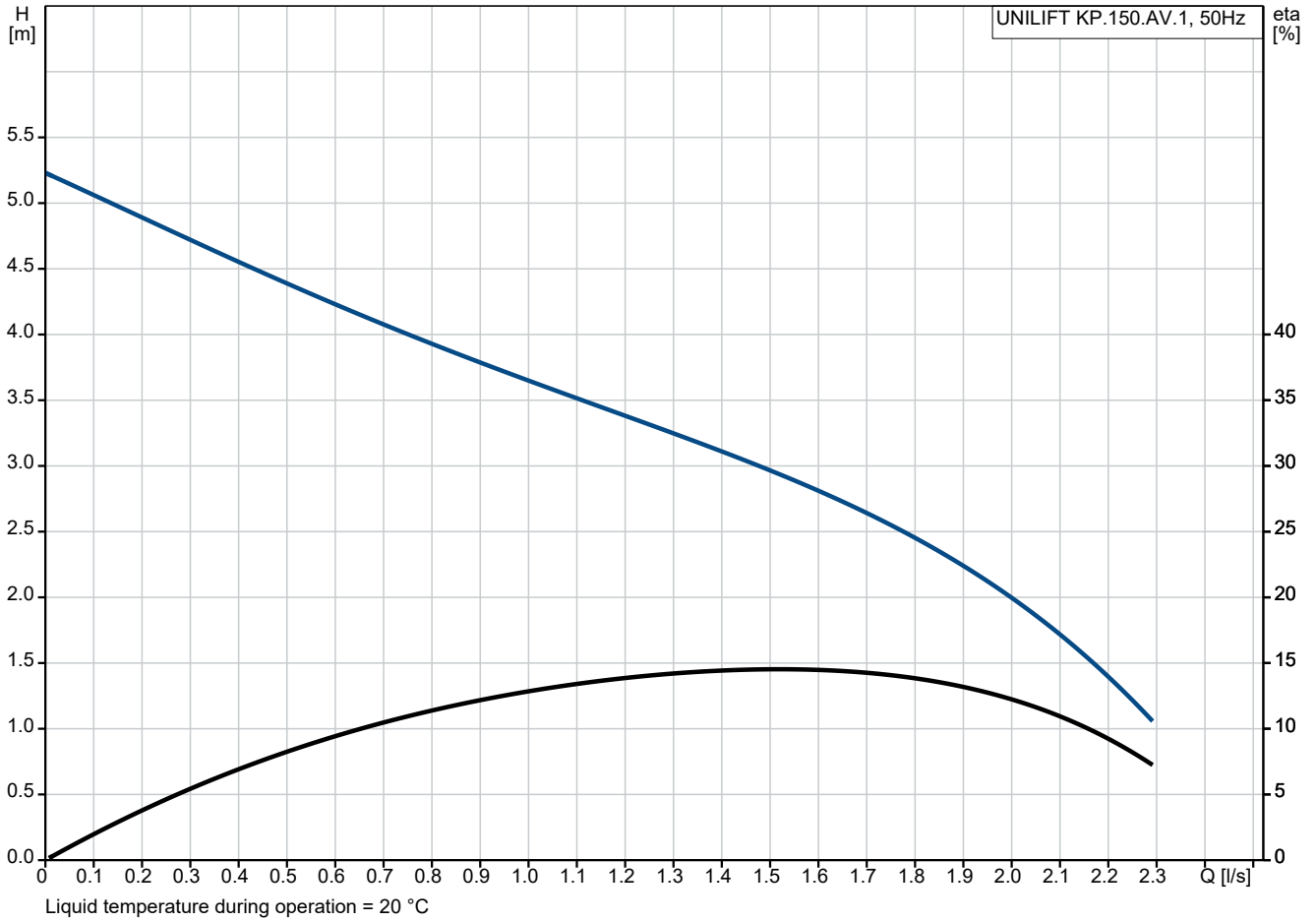
EN 1.4301

AISI 304

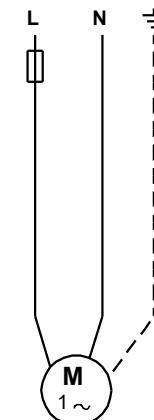
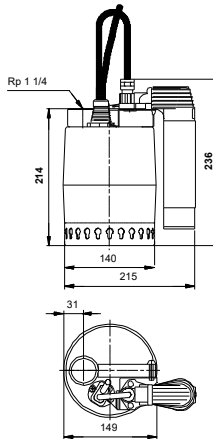
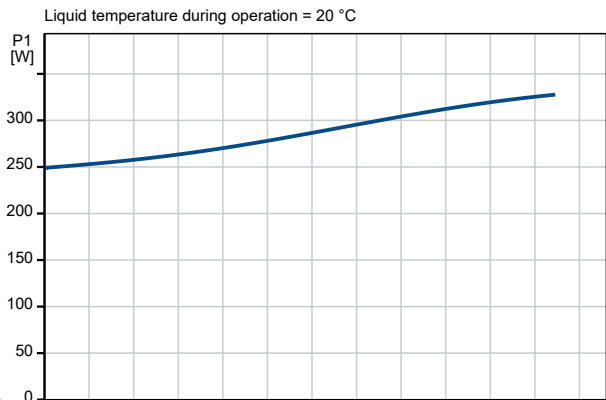
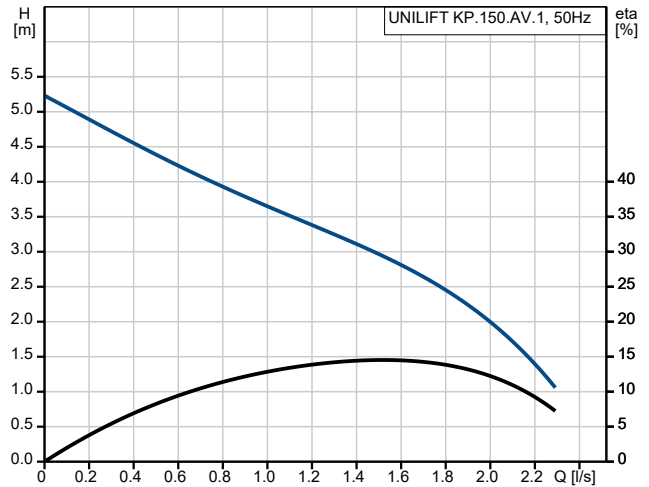
Qty.	Description
------	-------------

1	<p>Installation:</p> <p>Range of ambient temperature: 0 .. 50 °C</p> <p>Type of connection: Rp</p> <p>Size of connection: 1 1/4 inch</p> <p>Maximum installation depth: 7 m</p> <p>Place of installation: Indoor/outdoor</p> <p>Electrical data:</p> <p>Power input - P1: 300 W</p> <p>Rated power - P2: 0.15 kW</p> <p>Mains frequency: 50 Hz</p> <p>Rated voltage: 1 x 220-230 V</p> <p>Rated current: 1.3 A</p> <p>Capacitor size - run: 8 µF/400 V</p> <p>Enclosure class (IEC 34-5): IP68</p> <p>Insulation class (IEC 85): F</p> <p>Length of power cable: 10 m</p> <p>Type of cable plug: SCHUKO</p> <p>Others:</p> <p>Net weight: 6.5 kg</p> <p>Gross weight: 7 kg</p> <p>Shipping volume: 0.013 m³</p> <p>Danish VVS No.: 391215116</p> <p>Swedish RSK No.: 5885718</p> <p>Finnish LVI No.: 4822521</p> <p>Norwegian NRF no.: 9040753</p> <p>Country of origin: HU</p> <p>Custom tariff no.: 84137021</p> <p>Environmental approvals: WEEE</p>
---	--------------------------------------------------------------------------------------------------------------------------------------------------------------------------------------------------------------------------------------------------------------------------------------------------------------------------------------------------------------------------------------------------------------------------------------------------------------------------------------------------------------------------------------------------------------------------------------------------------------------------------------------------------------------------------------------------------------------------------------------------------------------------------------------------------------------------------------------------------------------------------------------------------------------------------------------------------------------

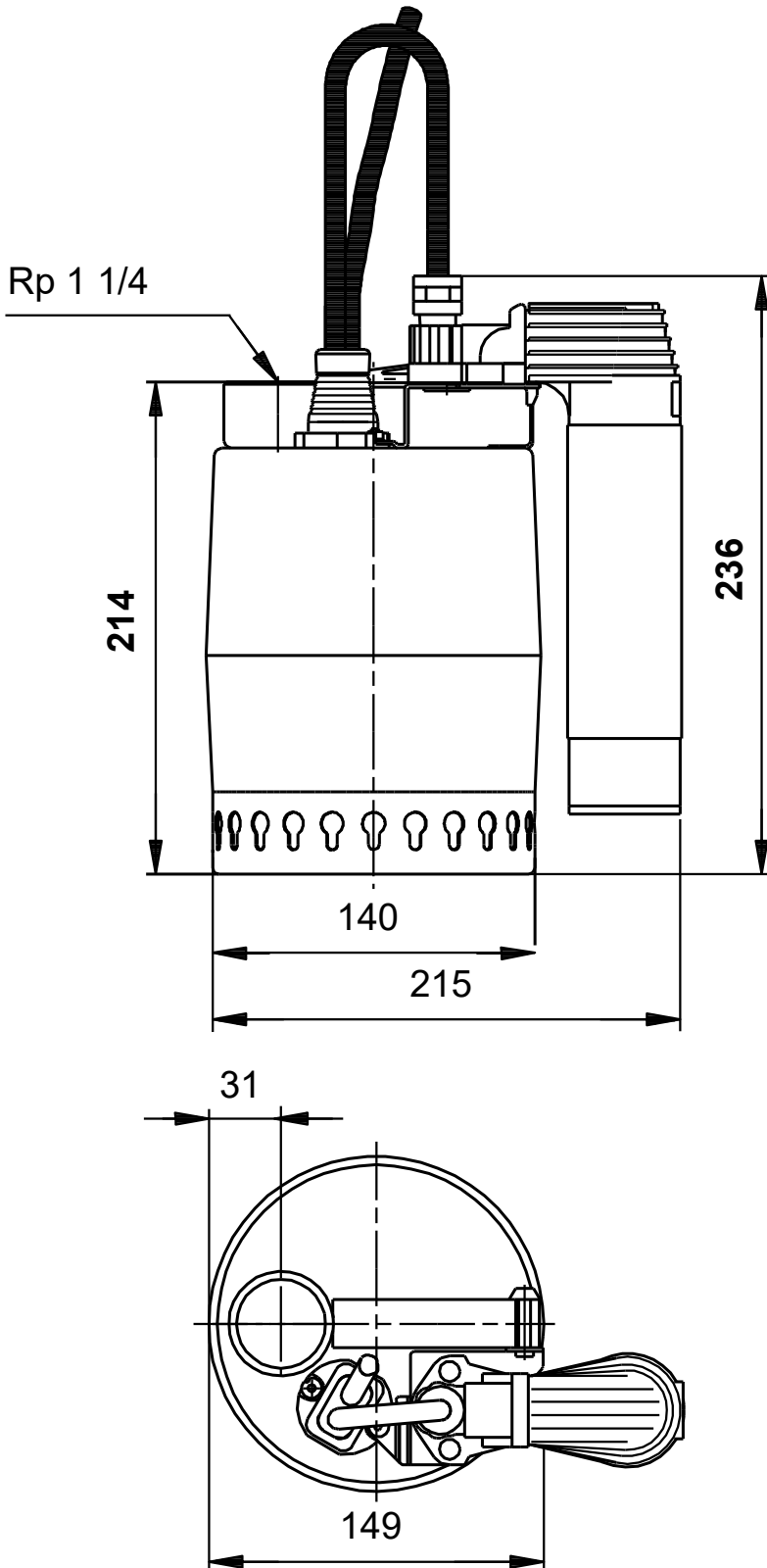
011H1900 UNILIFT KP.150.AV.1 50 Hz



Description	Value
General information:	
Product name:	UNILIFT KP.150.AV.1
Product No:	011H1900
EAN number:	5700391115561
Price:	EUR 531
Technical:	
Maximum flow:	2.36 l/s
Rated head:	2.94 m
Maximum head:	5.5 m
Max. Particle:	10 mm
Approvals:	CE,RCM,VDE,LGABG,EAC,TUV RHWID,MORO,UKCA,SEPRO
Model:	A
Materials:	
Pump housing:	Stainless steel
Pump housing:	EN 1.4301
Pump housing:	AISI 304
Impeller:	Stainless steel
Impeller:	EN 1.4301
Impeller:	AISI 304
Installation:	
Range of ambient temperature:	0 .. 50 °C
Type of connection:	Rp
Size of connection:	1 1/4 inch
Maximum installation depth:	7 m
Place of installation:	Indoor/outdoor
Liquid:	
Liquid temperature range:	0 .. 50 °C
Selected liquid temperature:	20 °C
Density:	998.2 kg/m ³
Electrical data:	
Power input - P1:	300 W
Rated power - P2:	0.15 kW
Mains frequency:	50 Hz
Rated voltage:	1 x 220-230 V
Rated current:	1.3 A
Capacitor size - run:	8 µF/400 V
Enclosure class (IEC 34-5):	IP68
Insulation class (IEC 85):	F
Built-in motor protection:	CONTACT
Thermal protec:	INT.
Length of power cable:	10 m
Type of cable plug:	SCHUKO
Controls:	
Level switch:	AV
Others:	
Net weight:	6.5 kg
Gross weight:	7 kg
Shipping volume:	0.013 m ³
Danish VVS No.:	391215116
Swedish RSK No.:	5885718
Finnish LVI No.:	4822521
Norwegian NRF no.:	9040753
Country of origin:	HU
Custom tariff no.:	84137021
Environmental approvals:	WEEE



011H1900 UNILIFT KP.150.AV.1 50 Hz



Note! All units are in [mm] unless others are stated.
Disclaimer: This simplified dimensional drawing does not show all details.