

**Qty. Description**

1 **MAGNA 25-40**



**Note! Product picture may differ from actual product**

Product No.: [96817929](#)

The pump is of the canned rotor type, i.e. pump and motor form an integral unit without shaft seal and with only two gaskets for sealing.

The pumped liquid lubricates the bearings.

In order to avoid problems in connection with disposal, great importance has been attached to using as few different materials as possible.

A pump with no maintenance requirements and extremely low Life Cycle Cost.

The pump is characterized by:

- \* Electronically Commutated Motor (ECM) with permanent magnet rotor
- \* Pump controller integrated
- \* Ceramic radial bearings
- \* Carbon axial bearing
- \* Stainless steel rotor can, bearing plate and rotor cladding
- \* Aluminium alloy stator housing
- \* Cast iron pump housing
- \* Protected against overload

The pump is a single-phased.

The motor does not require external motor protection

Grundfos MAGNA - part of Series 2000 pumps - feature automatic control of differential pressure through adaptation of pump performance to actual heat requirement without the need for connection of external components

Four control modes are available:

- \* AUTOADAPT (self-regulating from "one proportional pressure curve to another") to optimise comfort and reduce energy consumption to a minimum
- \* Proportional pressure
- \* Constant pressure
- \* Constant curve (available through external communication only)

The pump can communicate through

- \* Integrated clip-on optional Relay module (start/stop signal, alarm/feed-back signal)
- \* Integrated clip-on optional GENIbus module (start/stop signal, alarm/feed-back signal, 0-10 V analog input, control of twin-head pumps, and external forced control via inputs for Max. curve and Min. curve)
- \* Handheld remote control R100 (separate Grundfos product)

Liquid:

Pumped liquid: Water  
 Liquid temperature range: 2 .. 95 °C  
 Selected liquid temperature: 60 °C  
 Density: 983.2 kg/m<sup>3</sup>

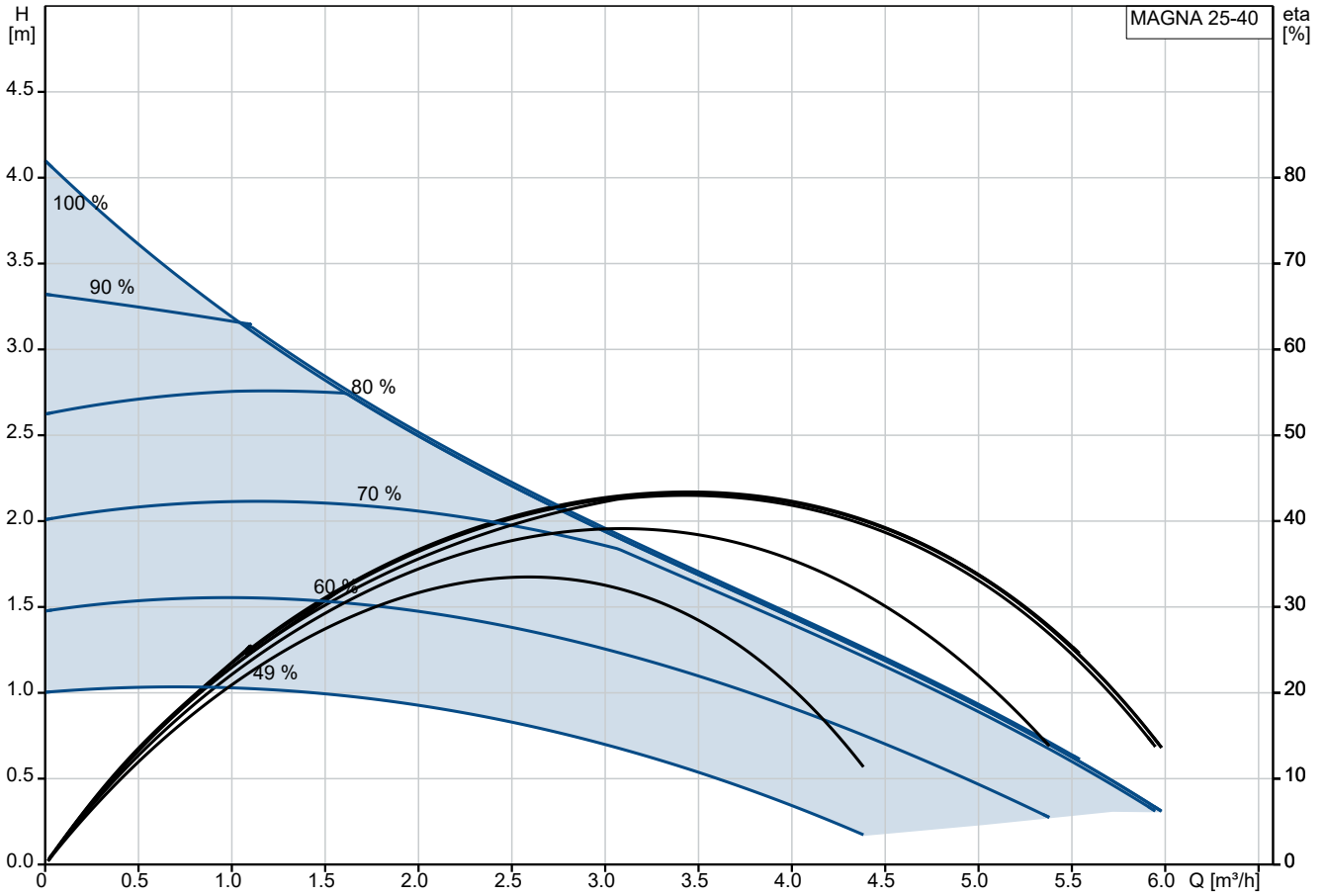
Technical:

TF class: 110

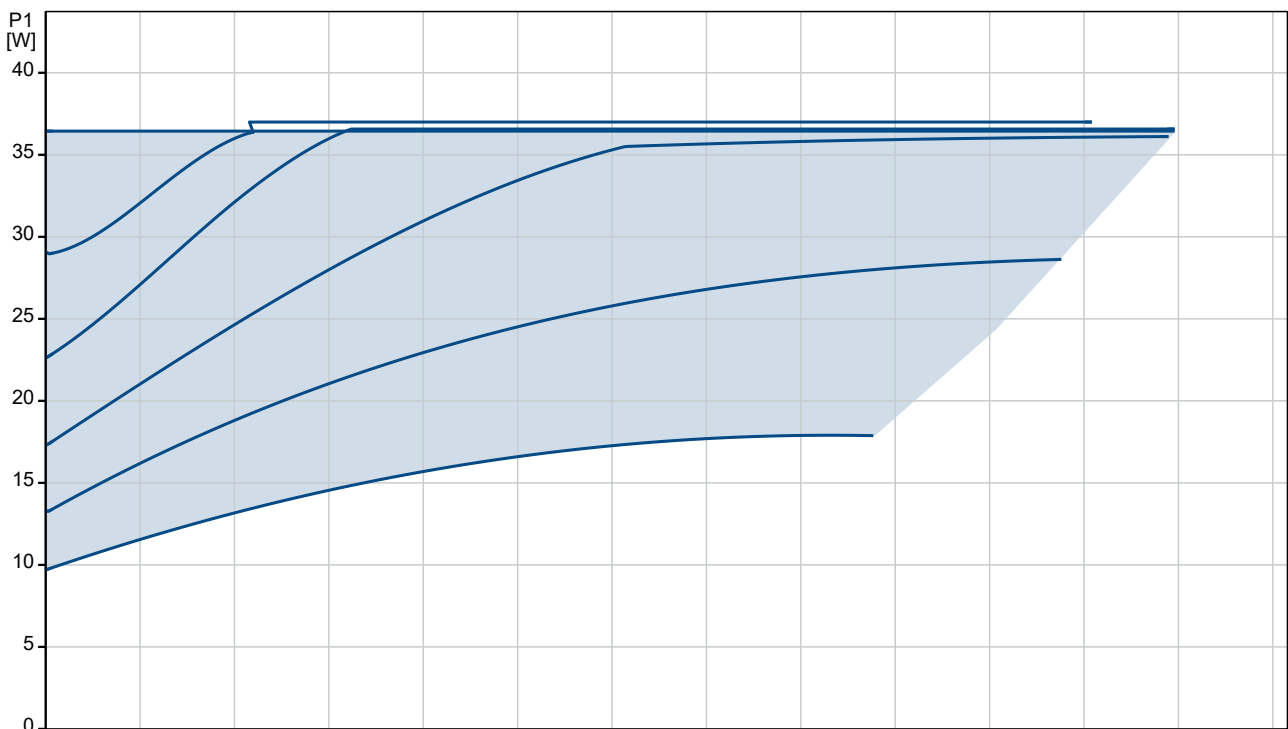
**Qty. Description**

1	<p>Approvals: CE,TSE,GOST2</p> <p>Materials:</p> <p>Pump housing: Cast iron EN-JL1040 ASTM 35 B - 40 B</p> <p>Impeller: Composite, PES</p> <p>Installation:</p> <p>Range of ambient temperature: 0 .. 40 °C</p> <p>Maximum operating pressure: 10 bar</p> <p>Pipe connection: G 1 1/2</p> <p>Port-to-port length: 180 mm</p> <p>Electrical data:</p> <p>Power input - P1: 10 .. 37 W</p> <p>Mains frequency: 50 / 60 Hz</p> <p>Rated voltage: 1 x 230-240 V</p> <p>Maximum current consumption: 0.09 .. 0.28 A</p> <p>Enclosure class (IEC 34-5): X4D</p> <p>Insulation class (IEC 85): F</p> <p>Others:</p> <p>Energy (EEI): 0.22</p> <p>Gross weight: 5.3 kg</p> <p>Shipping volume: 0.012 m<sup>3</sup></p>
---	--

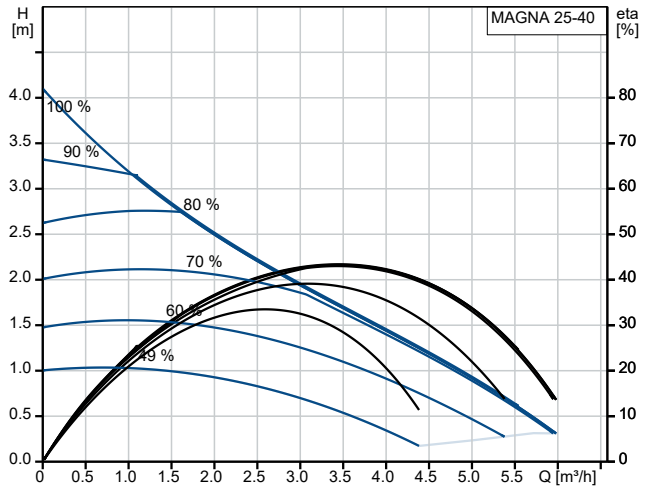
## 96817929 MAGNA 25-40



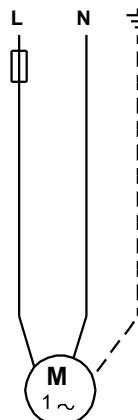
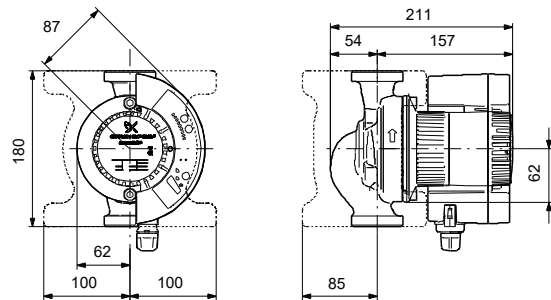
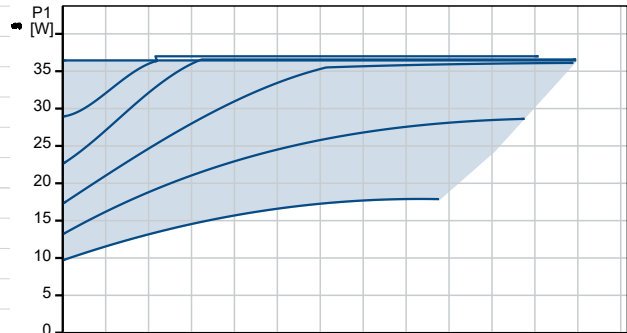
Pumped liquid = Water  
 Liquid temperature during operation = 60 °C  
 Density = 983.2 kg/m³



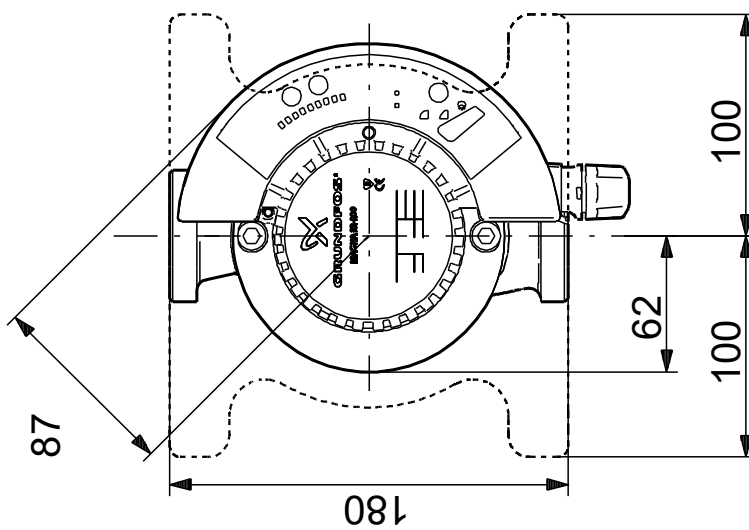
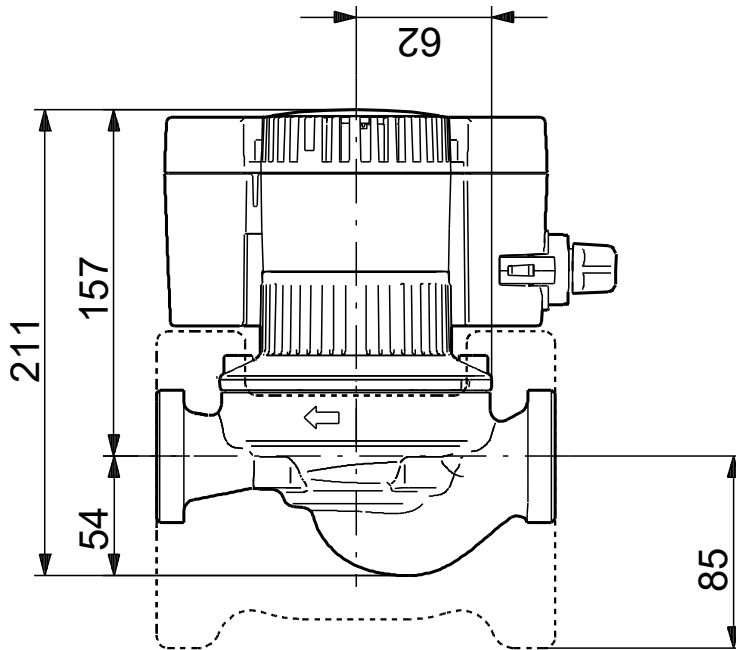
Description	Value
<b>General information:</b>	
Product name:	MAGNA 25-40
Product No:	96817929
EAN number:	5700311102374
<b>Technical:</b>	
Head max:	40 dm
TF class:	110
Approvals:	CE, TSE, GOST2
<b>Materials:</b>	
Pump housing:	Cast iron
Pump housing:	EN-JL1040
Pump housing:	ASTM 35 B - 40 B
Impeller:	Composite, PES
<b>Installation:</b>	
Range of ambient temperature:	0 .. 40 °C
Maximum operating pressure:	10 bar
Pipe connection:	G 1 1/2
Port-to-port length:	180 mm
<b>Liquid:</b>	
Pumped liquid:	Water
Liquid temperature range:	2 .. 95 °C
Selected liquid temperature:	60 °C
Density:	983.2 kg/m <sup>3</sup>
<b>Electrical data:</b>	
Power input - P1:	10 .. 37 W
Mains frequency:	50 / 60 Hz
Rated voltage:	1 x 230-240 V
Maximum current consumption:	0.09 .. 0.28 A
Enclosure class (IEC 34-5):	X4D
Insulation class (IEC 85):	F
<b>Controls:</b>	
Pos term box:	3H
<b>Others:</b>	
Energy (EEI):	0.22
Gross weight:	5.3 kg
Shipping volume:	0.012 m <sup>3</sup>



Pumped liquid = Water  
 Liquid temperature during operation = 60 °C  
 Density = 983.2 kg/m<sup>3</sup>

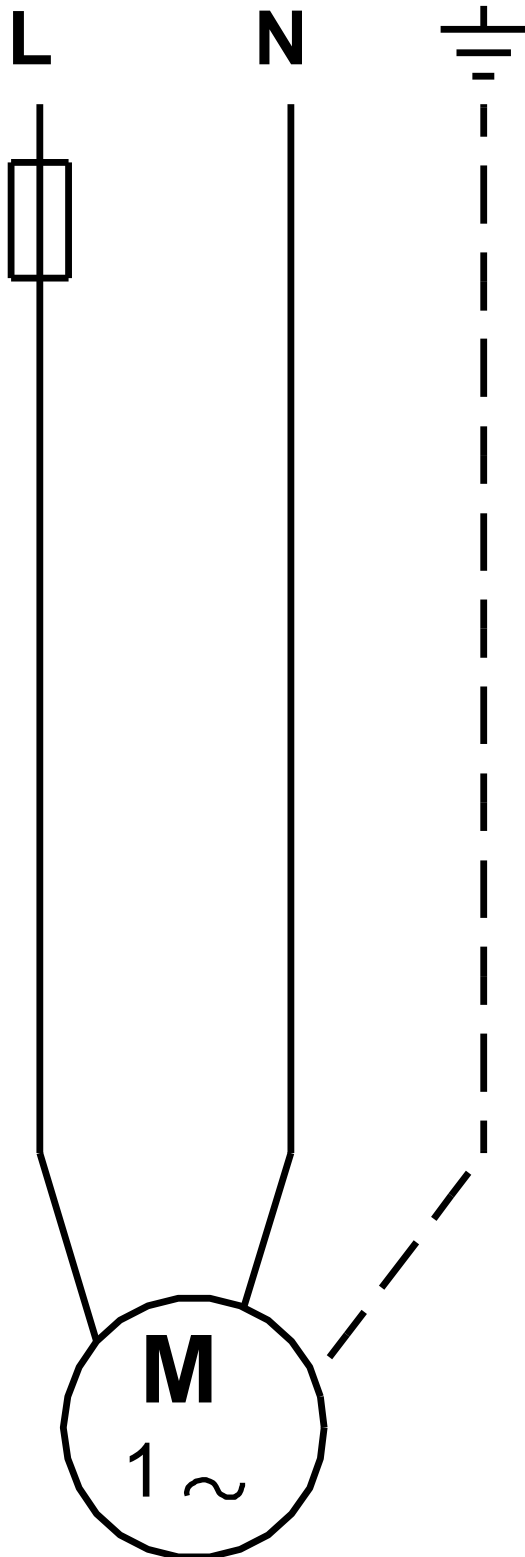


## 96817929 MAGNA 25-40



Note! All units are in [mm] unless others are stated.  
Disclaimer: This simplified dimensional drawing does not show all details.

**96817929 MAGNA 25-40**



Note! All units are in [mm] unless others are stated.