

Qty. Description

1 ALPHA1 25-40 180



Note! Product picture may differ from actual product

Product No.: [93074166](#)

ALPHA1 is a high-efficiency circulator pump fitted with an electronically commutated motor and designed for circulating liquids in heating and air conditioning systems.

ALPHA1 is equipped with intelligent controls and offers three control modes: constant pressure, proportional pressure and constant curve. Each mode has three adjustable speed settings.

The toolless installer plug enables a fast and easy electrical connection.

The automatic self-venting ability and dry-running protection ensure quiet operation and reliability of the pump.

The product features robust startup which reduces the risk of blockages from dirt, magnetite and limescale build-up. In the unlikely case of a blocked pump, the motor continuously attempts to start at the highest possible torque, ensuring startup in tough conditions.

The ceramic shaft and bearings experience minimal wear, resulting in a longer lifespan and a reduced likelihood of noise in the system due to increased bearing clearance from wear.

Fault finding is fast and easy by using the error symbols on the pump operating panel.

Liquid:
Pumped liquid: Water
Liquid temperature range: 2 .. 110 °C
Selected liquid temperature: 60 °C
Density: 983.2 kg/m³

Technical:
Rated flow: 1.65 m³/h
Rated head: 1.89 m
Pump head orientation: 9H
TF class: 110
Approvals: CE,VDE

Materials:
Pump housing: Cast iron
EN 1561 EN-GJL-150
ASTM A48-150B
Impeller: Composite
PES+30% GF

Installation:
Range of ambient temperature: 0 .. 55 °C
Maximum operating pressure: 10 bar
Type of connection: G



Company name:

Created by:

Phone:

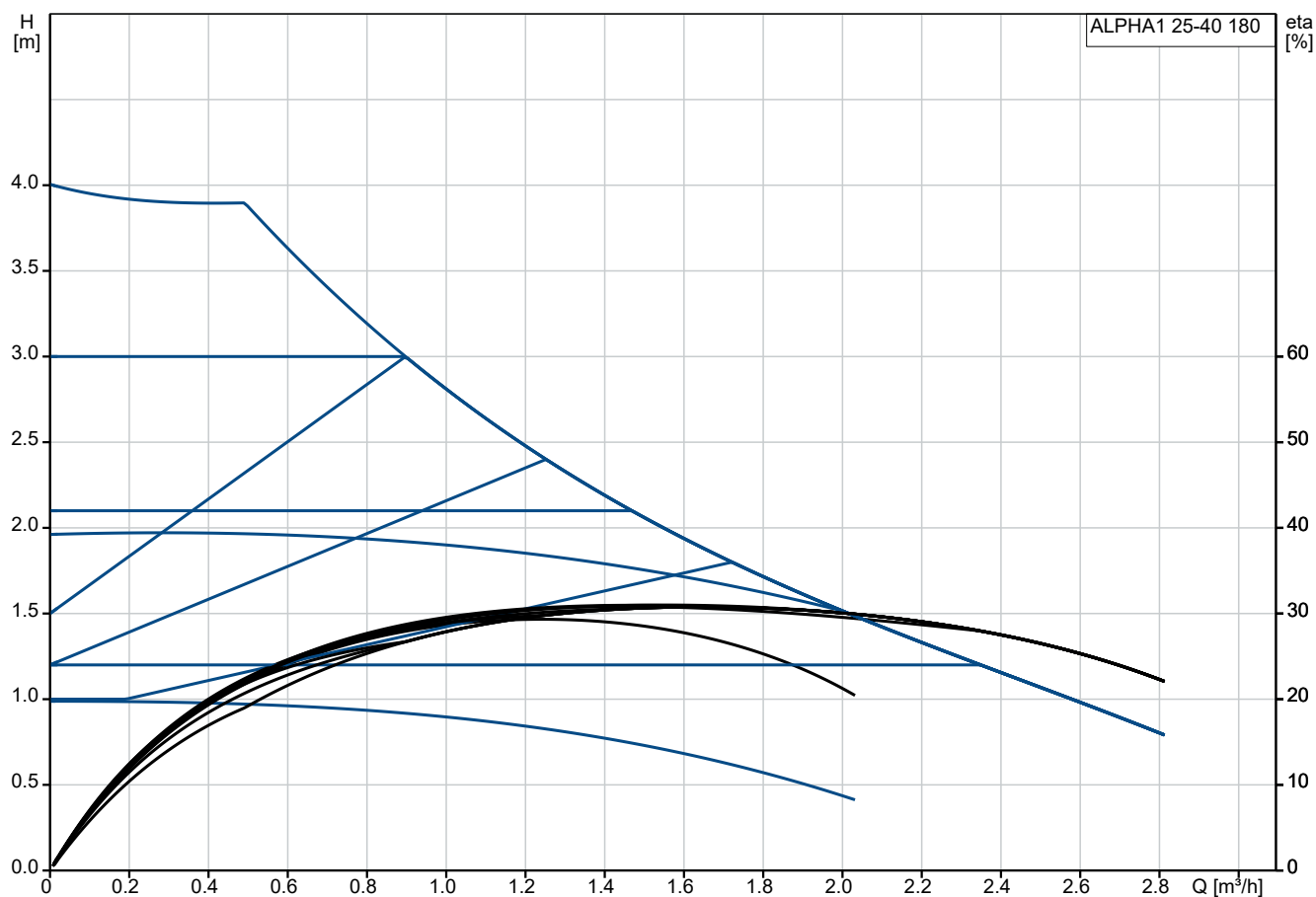
Date:

26/06/2025

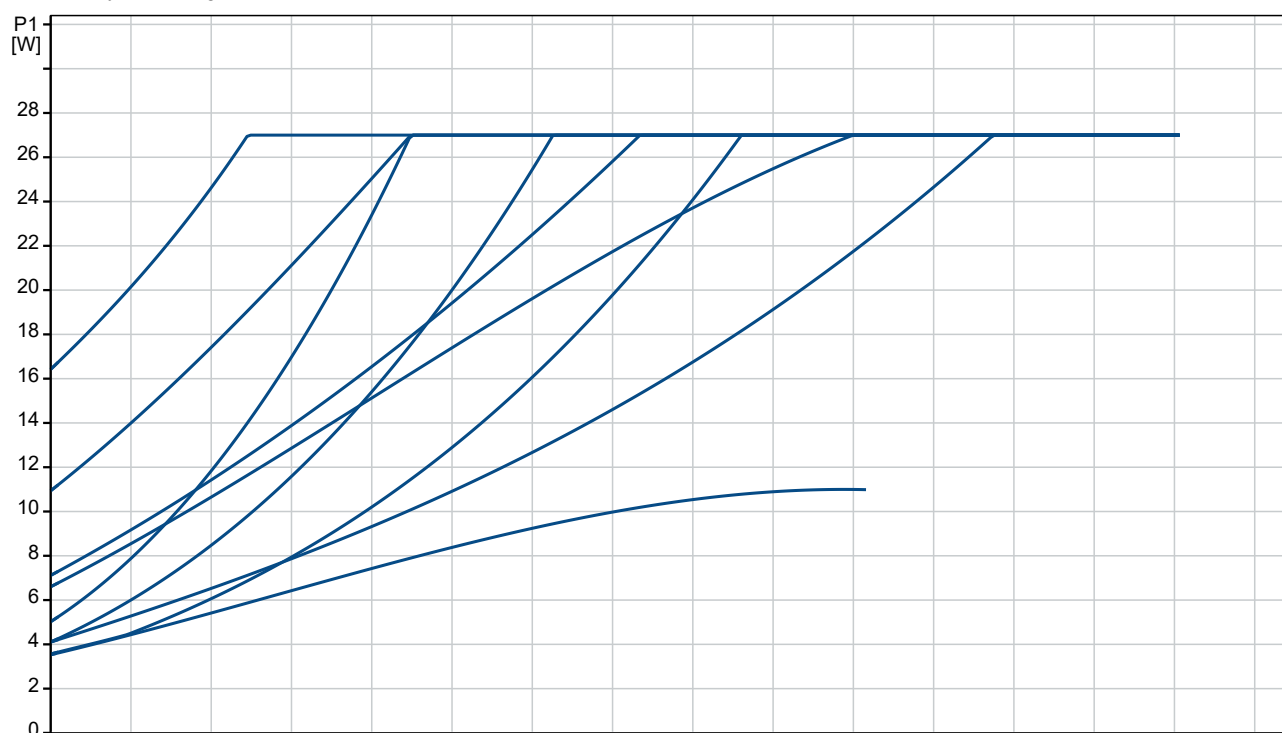
| Qty. | Description |
|------|-------------|
|------|-------------|

| | |
|---|---------------------------------------------------------------------------------------------------------------------------------------------------------------------------------------------------------------------------------------------------------------------------------------------------------------------------------------------------------------------------------------------------------------------------------------------------------------------------------------------------------------------------------------------------------------------------------------------------------------------|
| 1 | Size of connection: 1 1/2 inch Pressure rating for connection: PN 10 Port-to-port length: 180 mm Electrical data: Minimum power input - P1: 4 W Power input P1: 27 W Mains frequency: 50 / 60 Hz Rated voltage: 1 x 220-240 V Minimum current consumption: 0.06 A Maximum current consumption: 0.3 A Enclosure class (IEC 34-5): IP44 Insulation class (IEC 85): F Thermal protection: Electronic Others: Energy (EEI): 0.20 Net weight: 1.95 kg Gross weight: 2.14 kg Shipping volume: 0.004 m³ Country of origin: RS Custom tariff no.: 84137030 |
|---|---------------------------------------------------------------------------------------------------------------------------------------------------------------------------------------------------------------------------------------------------------------------------------------------------------------------------------------------------------------------------------------------------------------------------------------------------------------------------------------------------------------------------------------------------------------------------------------------------------------------|

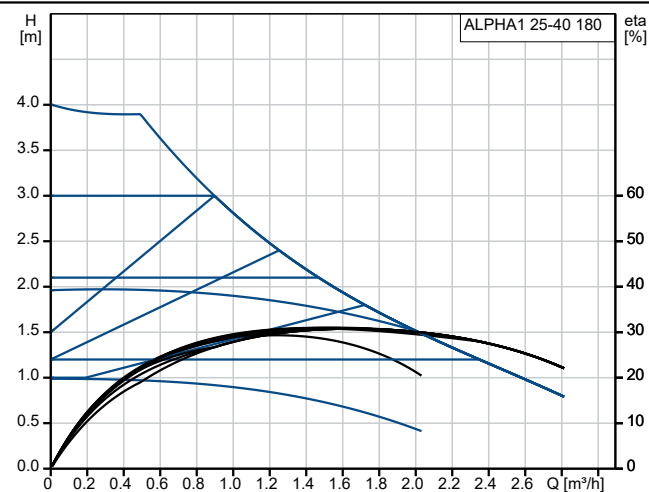
93074166 ALPHA1 25-40 180



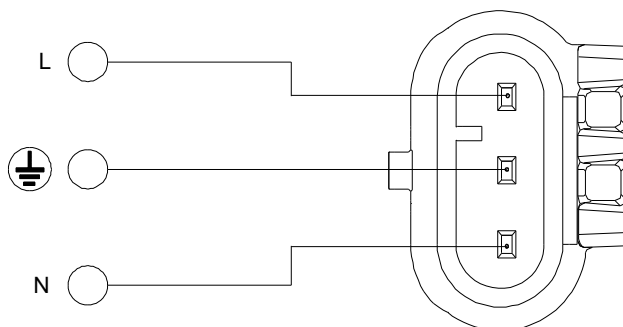
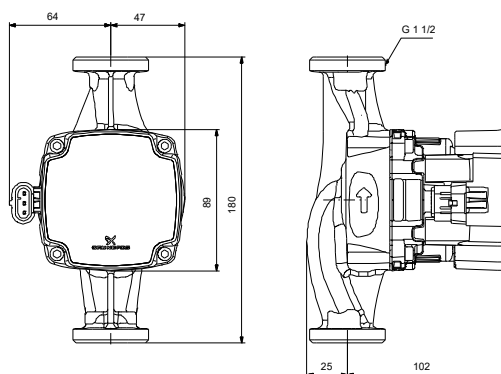
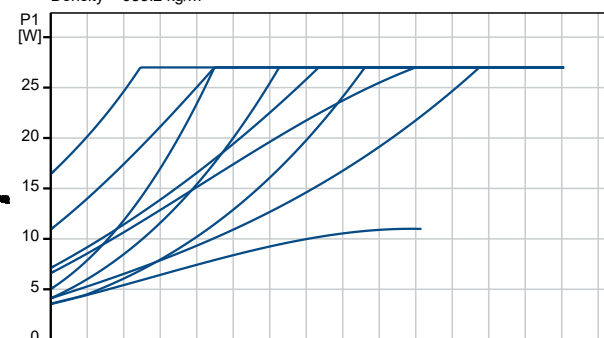
Pumped liquid = Water
Liquid temperature during operation = 60 °C
Density = 983.2 kg/m³



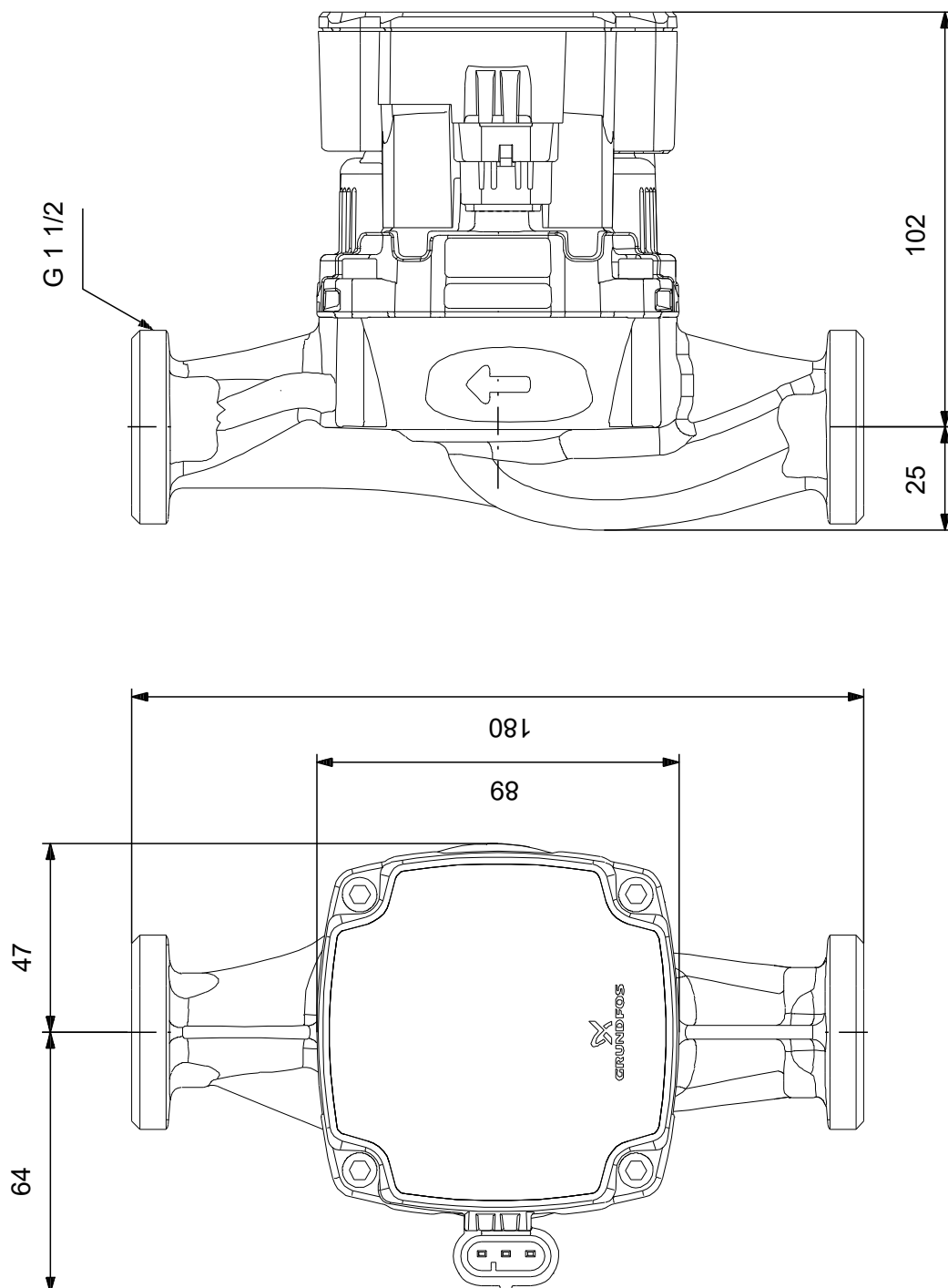
| Description | Value |
|---------------------------------|--------------------|
| General information: | |
| Product name: | ALPHA1 25-40 180 |
| Product No: | 93074166 |
| EAN number: | 5715467403923 |
| Technical: | |
| Rated flow: | 1.65 m³/h |
| Rated head: | 1.89 m |
| Maximum head: | 40 dm |
| Pump head orientation: | 9H |
| TF class: | 110 |
| Approvals: | CE, VDE |
| Model: | D |
| Materials: | |
| Pump housing: | Cast iron |
| | EN 1561 EN-GJL-150 |
| | ASTM A48-150B |
| Impeller: | Composite |
| | PES+30% GF |
| Installation: | |
| Range of ambient temperature: | 0 .. 55 °C |
| Maximum operating pressure: | 10 bar |
| Type of connection: | G |
| Size of connection: | 1 1/2 inch |
| Pressure rating for connection: | PN 10 |
| Port-to-port length: | 180 mm |
| Liquid: | |
| Pumped liquid: | Water |
| Liquid temperature range: | 2 .. 110 °C |
| Selected liquid temperature: | 60 °C |
| Density: | 983.2 kg/m³ |
| Electrical data: | |
| Minimum power input - P1: | 4 W |
| Power input P1: | 27 W |
| Mains frequency: | 50 / 60 Hz |
| Rated voltage: | 1 x 220-240 V |
| Minimum current consumption: | 0.06 A |
| Maximum current consumption: | 0.3 A |
| Enclosure class (IEC 34-5): | IP44 |
| Insulation class (IEC 85): | F |
| Thermal protection: | Electronic |
| Others: | |
| Energy (EEI): | 0.20 |
| Net weight: | 1.95 kg |
| Gross weight: | 2.14 kg |
| Shipping volume: | 0.004 m³ |
| Country of origin: | RS |
| Custom tariff no.: | 84137030 |



Pumped liquid = Water
Liquid temperature during operation = 60 °C
Density = 983.2 kg/m³



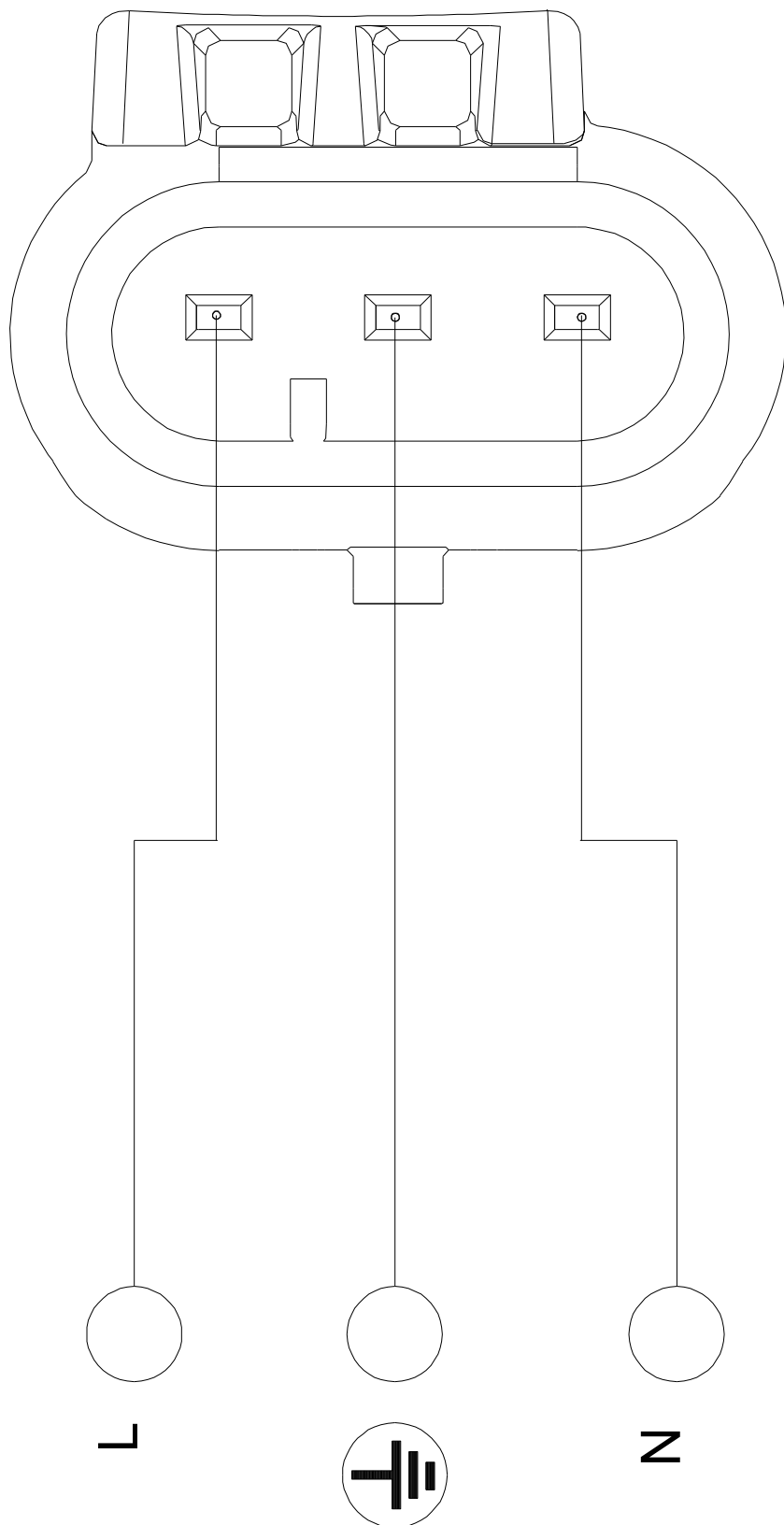
93074166 ALPHA1 25-40 180



Note! All units are in [mm] unless others are stated.

Disclaimer: This simplified dimensional drawing does not show all details.

93074166 ALPHA1 25-40 180



Note! All units are in [mm] unless others are stated.