

## Qty. Description

1 ALPHA1 GO 25-40 180



Note! Product picture may differ from actual product

Product No.: [93074185](#)

ALPHA1 GO is a high-efficiency circulator pump fitted with an electronically commutated motor and designed for circulating liquids in heating and air conditioning systems.

ALPHA1 GO is equipped with intelligent controls and offers three control modes: constant pressure, proportional pressure and constant curve. Each mode has three adjustable speed settings.

Replacement of older integrated and stand-alone circulator pumps, including replicating curves, is made easy by using the Grundfos GO app and operating panel.

The toolless installer plug enables a fast and easy electrical connection.

The automatic self-venting ability and dry-running protection ensure quiet operation and reliability of the pump.

The product features robust startup which reduces the risk of blockages from dirt, magnetite and limescale build-up. In the unlikely case of a blocked pump, the motor continuously attempts to start at the highest possible torque, ensuring startup in tough conditions.

The ceramic shaft and bearings experience minimal wear, resulting in a longer lifespan and a reduced likelihood of noise in the system due to increased bearing clearance from wear.

Fault finding is fast and easy by using the error codes on the pump operating panel.

### Controls:

Frequency converter: Built-in

### Liquid:

Pumped liquid: Water  
Liquid temperature range: 2 .. 110 °C  
Selected liquid temperature: 20 °C  
Density: 998.2 kg/m<sup>3</sup>

### Technical:

Rated flow: 1.65 m<sup>3</sup>/h  
Rated head: 1.89 m  
Pump head orientation: 9H  
TF class: 110  
Approvals: CE,VDE

### Materials:

Pump housing: Cast iron  
EN 1561 EN-GJL-150  
ASTM A48-150B



Company name:

Created by:

Phone:

Date:

26/06/2025

Qty.	Description
------	-------------

1	Impeller: Composite PES+30% GF
---	-----------------------------------

Installation:

Range of ambient temperature: 0 .. 55 °C

Maximum operating pressure: 10 bar

Pipe connection standard: ISO 228-1

Type of connection: G

Size of connection: 1 1/2 inch

Pressure rating for connection: PN 10

Port-to-port length: 180 mm

Electrical data:

P1 min.: 4 W

Max. P1: 27 W

Mains frequency: 50 / 60 Hz

Rated voltage: 1 x 220-240 V

Minimum current consumption: 0.06 A

Maximum current consumption: 0.3 A

Enclosure class (IEC 34-5): IP44

Insulation class (IEC 85): F

Thermal protection: Electronic

Others:

Energy (EEI): 0.20

Net weight: 1.92 kg

Gross weight: 2.11 kg

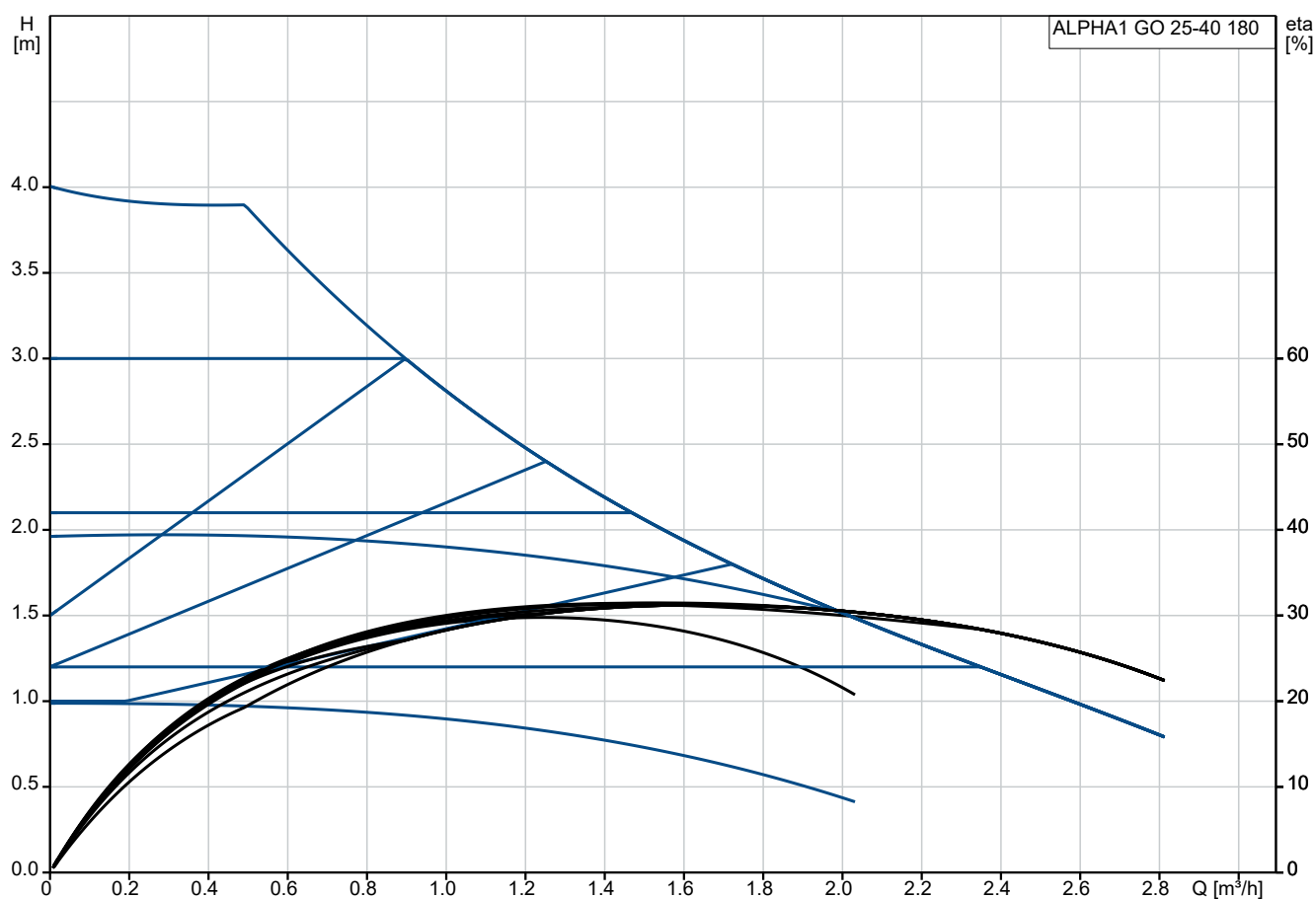
Shipping volume: 0.004 m³

Norwegian NRF no.: 1392464

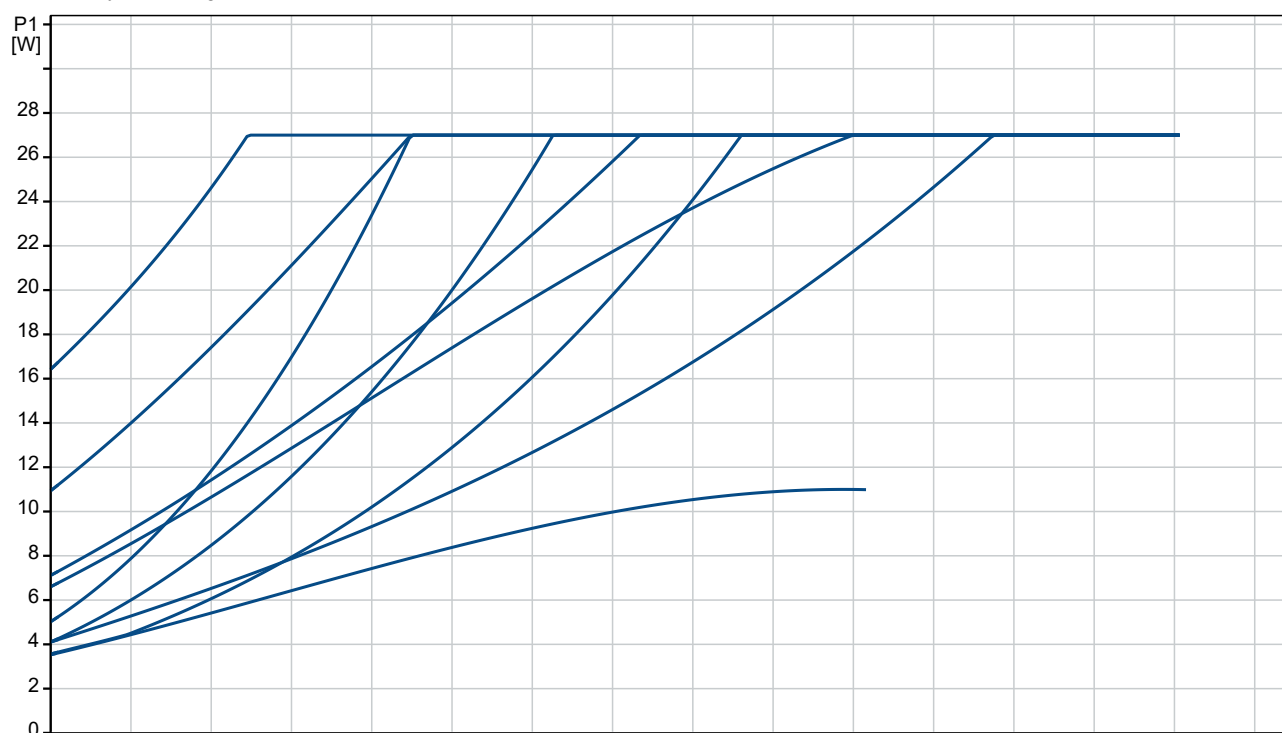
Country of origin: RS

Custom tariff no.: 84137030

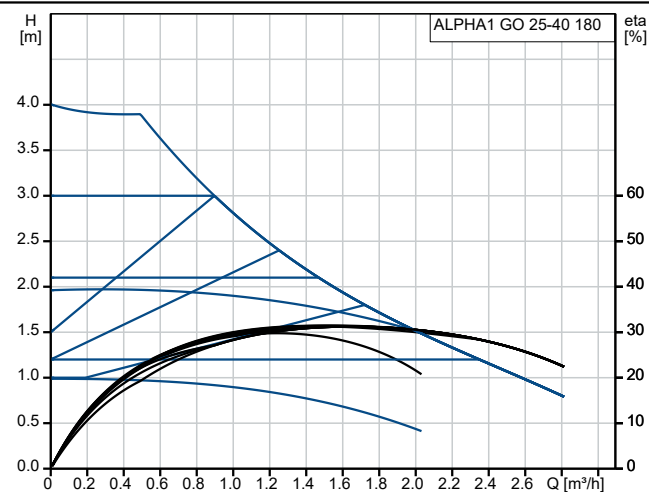
## 93074185 ALPHA1 GO 25-40 180



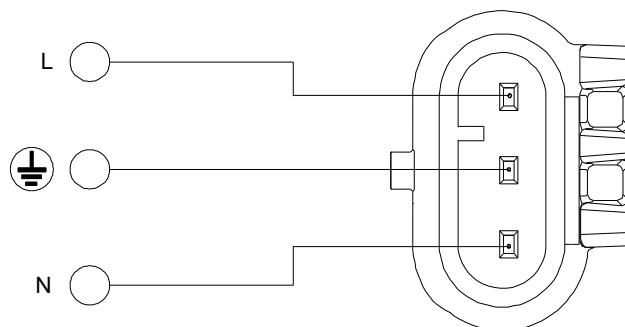
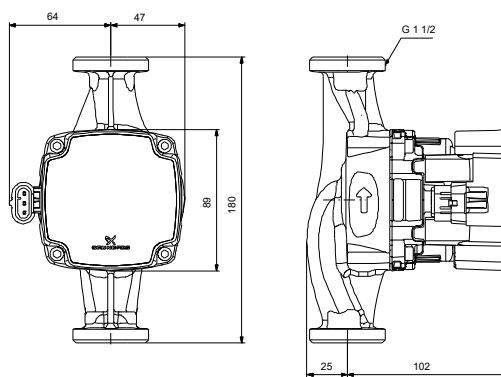
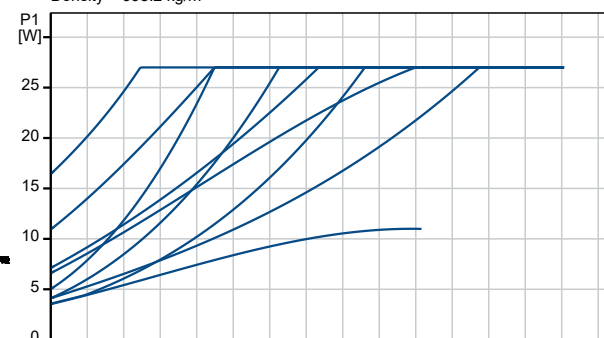
Pumped liquid = Water  
Liquid temperature during operation = 20 °C  
Density = 998.2 kg/m³



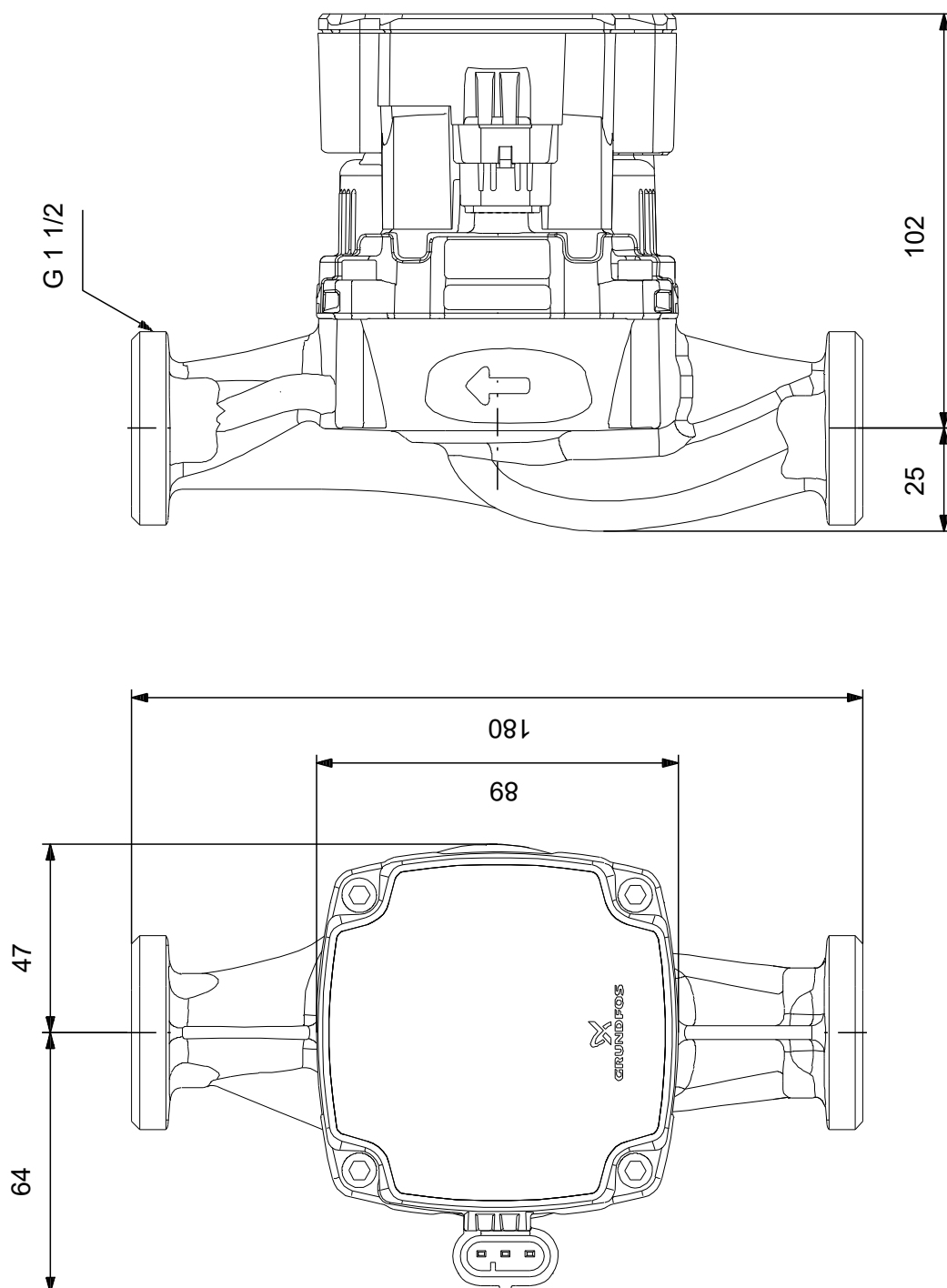
Description	Value
<b>General information:</b>	
Product name:	ALPHA1 GO 25-40 180
Product No:	93074185
EAN number:	5715467404128
<b>Technical:</b>	
Rated flow:	1.65 m³/h
Rated head:	1.89 m
Maximum head:	40 dm
Pump head orientation:	9H
TF class:	110
Approvals:	CE, VDE
Model:	A
<b>Materials:</b>	
Pump housing:	Cast iron
	EN 1561 EN-GJL-150
	ASTM A48-150B
Impeller:	Composite
	PES+30% GF
<b>Installation:</b>	
Range of ambient temperature:	0 .. 55 °C
Maximum operating pressure:	10 bar
Pipe connection standard:	ISO 228-1
Type of connection:	G
Size of connection:	1 1/2 inch
Pressure rating for connection:	PN 10
Port-to-port length:	180 mm
<b>Liquid:</b>	
Pumped liquid:	Water
Liquid temperature range:	2 .. 110 °C
Selected liquid temperature:	20 °C
Density:	998.2 kg/m³
<b>Electrical data:</b>	
P1 min.:	4 W
Max. P1:	27 W
Mains frequency:	50 / 60 Hz
Rated voltage:	1 x 220-240 V
Minimum current consumption:	0.06 A
Maximum current consumption:	0.3 A
Enclosure class (IEC 34-5):	IP44
Insulation class (IEC 85):	F
Thermal protection:	Electronic
<b>Controls:</b>	
Frequency converter:	Built-in
<b>Others:</b>	
Energy (EEI):	0.20
Net weight:	1.92 kg
Gross weight:	2.11 kg
Shipping volume:	0.004 m³
Norwegian NRF no.:	1392464
Country of origin:	RS
Custom tariff no.:	84137030



Pumped liquid = Water  
Liquid temperature during operation = 20 °C  
Density = 998.2 kg/m³



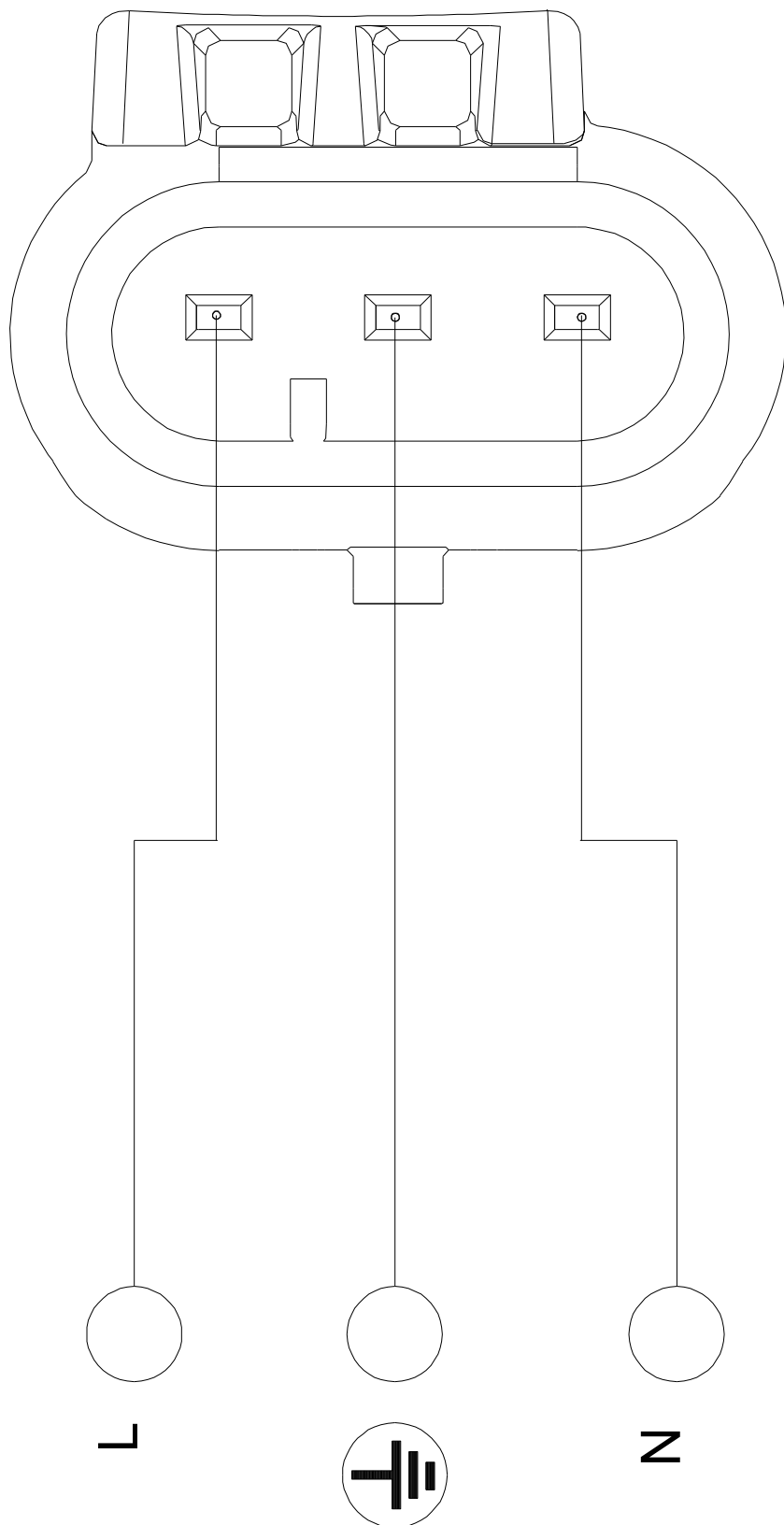
## 93074185 ALPHA1 GO 25-40 180



Note! All units are in [mm] unless others are stated.

Disclaimer: This simplified dimensional drawing does not show all details.

## 93074185 ALPHA1 GO 25-40 180



Note! All units are in [mm] unless others are stated.